



# Release 2.19.6

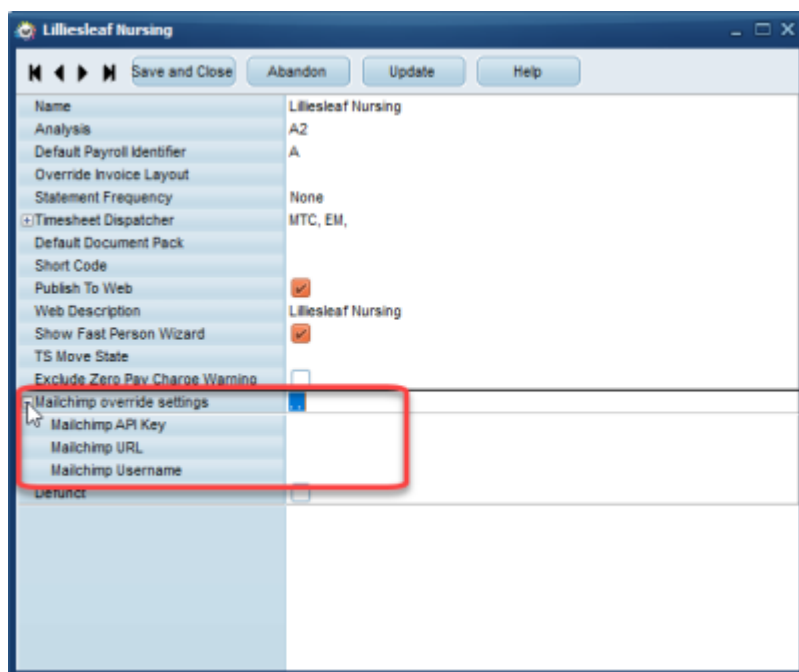
If you have custom forms defined in IQX, not all new features may be available to you. Your agency custom forms are shown on Help – About.

- [Features](#)
- [Enhancements](#)
- [System Administrator](#)
- [Fixes](#)

## FEATURES

### Make mailchimp separable by division

For Agencies that have multiple brands/divisions it is now possible to have different Mail Chimp Accounts for each division. This needs to be configured by the System Administrator



### Template with tick boxes

It is now possible to use fillable forms (Word documents with check boxes of 'Click here to enter text' areas) in your document templates to assist consultants in completing standard forms that need to be sent to contacts.



	CLIENT			
Client				
Are terms/contract required?	Yes <input type="checkbox"/>	No <input type="checkbox"/>	VMS? Yes <input type="checkbox"/>	No <input type="checkbox"/>
	If so, which one:			
Pre-Placement Checks	HCPC <input type="checkbox"/>	DBS <input type="checkbox"/>	RTW <input type="checkbox"/>	Rate Confirmation Attached <input type="checkbox"/>
Manager's Name	Click or tap here to enter text.			

## Warning if Critical Hub(s) not Running

Warning if Critical IQX Hubs not running. In Maintenance | Diagnostics | IQX Hub Monitor mark a Hub as Critical. If there is a problem there will be a warning when logging in.

## Ability to show unavailability Types on TempDesk Temps view

There is now the facility to show the reason for unavailability for a temp from within the temps view on the tempdesk.

## Wizard to Set-Up Profiles and Users to Support IQX Hub Web Services

Wizard to Set-Up Profiles and Users to Support IQX Hub Web Services.

## ENHANCEMENTS

### Main WPK Forms that have Multi-Line View names have been widened

The width of column on forms has been extended to prevent it looking cramped and words wrapping. It still wraps those that are extremely long eg Compliance Questionnaire, Compliance Domains and Compliance Documents. However you can drag this over so there is no wrapping and unlike previous versions if you 'save position' (click the iqx icon on the top left of a form) it will now remember the width of the bar, so when you close the form and reopen it, it remembers and displays your chosen settings.



## **Restriction of document file types for Compliance Documents**

In Compliance Documents you can drag in any document that is a PDF, DOC, JPG or TIF file. If you try to drag in any other file type you will get an error message.

## **Contact Events for sending a reference in IQX now automatically selects the referee email address**

The contact event for sending a reference in IQX now automatically selects the referee email address.

## **Images taken from phone cameras can be saved in IQX at a specific rotation**

Enable photo jpg files to have new orientation saved.

## **When deleting a Prov Timesheet that has an image attached - offer to resave image in main folder.**

Provisional timesheet images are now stored automatically in the timesheet folder if the provisional timesheet it is linked to is deleted.

## **New Mailmerge field for TempShift/tempshiftplan**

New merge field for tempsh iftplan.description available for notification templates.

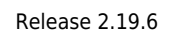
## **Filter on IQXWeb User Record Rights view**

Filter now on IQXWeb User record rights

## **Make prov timesheet and E-Timesheet colour consistent**

When viewing candidate timesheets the colours now reflect whether it is a provisional e-timesheet or an e-timesheet awaiting authorisation in addition to the provisional and completed timesheets.

## **Changing the order in the Payment allocation screen**



---

iqx - <https://iqxusers.co.uk/iqxhelp/>

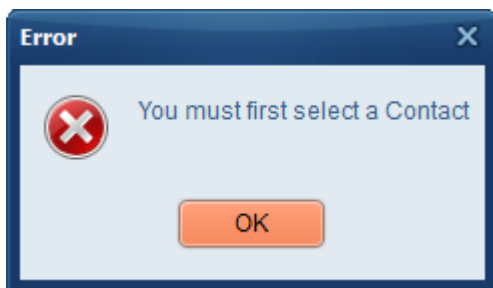


## Changes to Mail Merge Subscribed/Unsubscribed

There is a Switch for Client Contact Marketing Default to have the ability to force a new Company contact to be subscribed or Un-subscribed. This must be set up by System Administrator

## Warning if making a CE on Company form that no Contact selected

Failing to select a contact brings up an error message stating - 'You must first select a Contact'. As per below screenshot.



## Copy Shifts - button to ignore Unfilled shifts

Ignore unfilled shifts when Copy Shifts is used on the Temp Desk. This must be set up by System Administrator

## New style filters

A number of forms now have a filter box to allow you to type in and filter your selections more efficiently.

## Allow sending of texts from temp desk processing to unsubscribed candidates

This must be set up by System Administrator

## Prov Timesheet - User switch for Hide Provisional Timesheet Questionnaire

Provisional Time-sheets A new switch has been added which allows hiding of the Provisional Time-sheet questionnaire. Go to Maintenance>Users>User layout. Type Hide Provisional and then tick the activate button switch for Hide Provisional Timesheets Questionnaire.



## Deleting Broadbean advert brings up error

When you delete a Broadbean advert it turns red on their Website. In the IQX Vacancy the Broadbean button will change from having a red tick to plain grey scale upon a refresh.

That way you know an advert has expired or has been deleted.

From:

<https://iqxusers.co.uk/iqxhelp/> - **iqx**

Permanent link:

[https://iqxusers.co.uk/iqxhelp/doku.php?id=newreleases:release\\_2.19.6&rev=1568298816](https://iqxusers.co.uk/iqxhelp/doku.php?id=newreleases:release_2.19.6&rev=1568298816)

Last update: **2019/09/12 14:33**

